

# Come impostare la connessione esclusivamente su rete 3 UMTS/HSDPA. (MomoDesign MD-@ HSUPA)

Inserisci la chiavetta e avvia il software di connessione (figura 1)

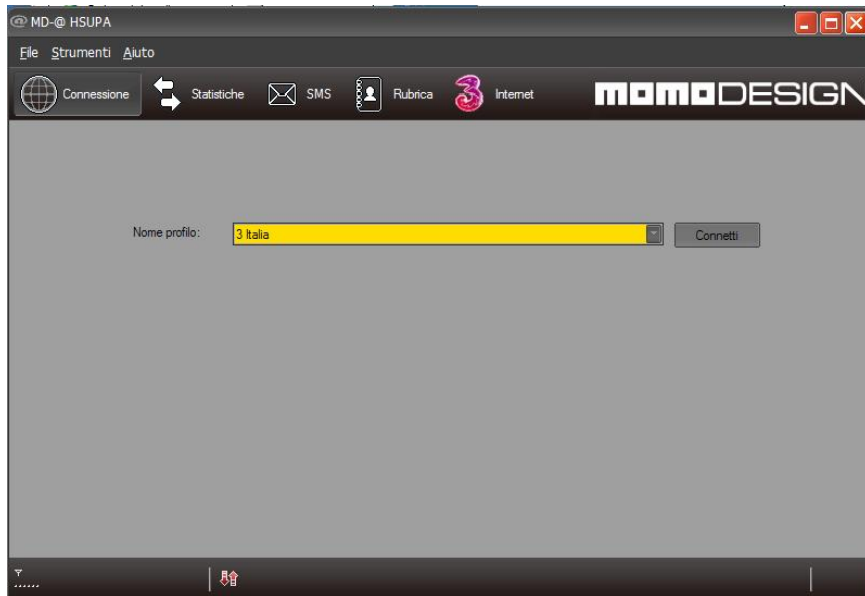


Fig. 1

Quando la chiavetta viene riconosciuta clicca su **Strumenti - Opzioni** (figura 2)

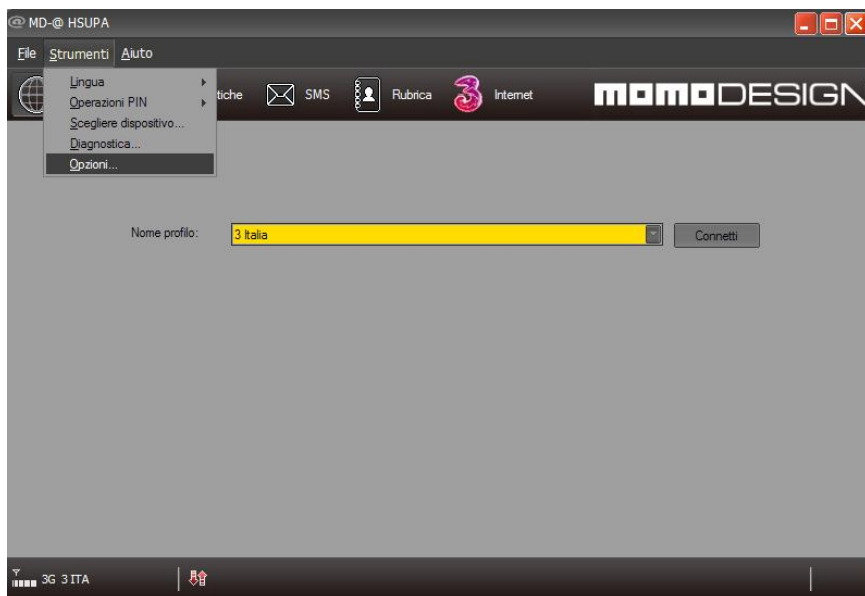


Fig. 2

Clicca su **rete** e nel menu **tipo rete** seleziona **solo 3G** e clicca su **applica** (figura 3 e 4)

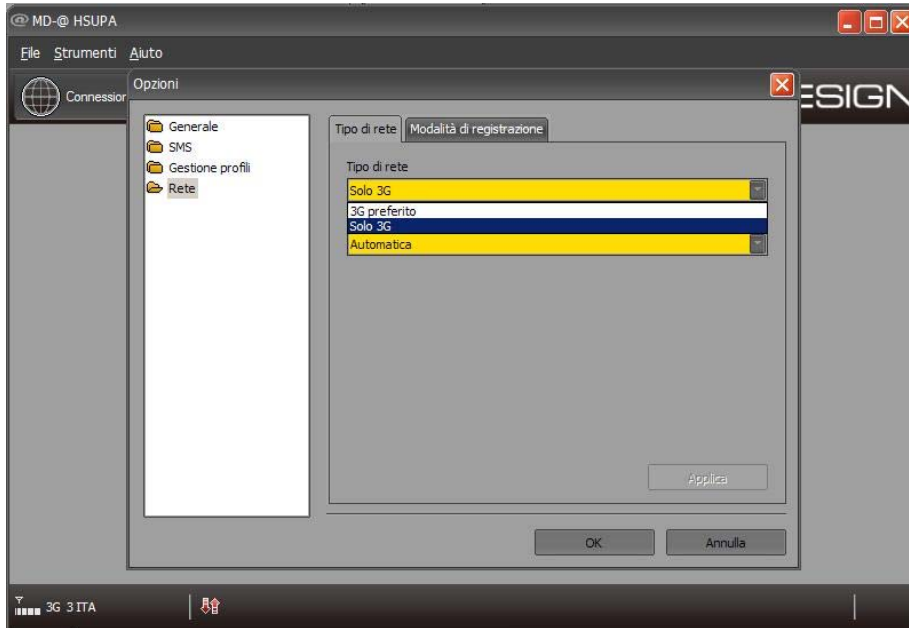


Fig. 3

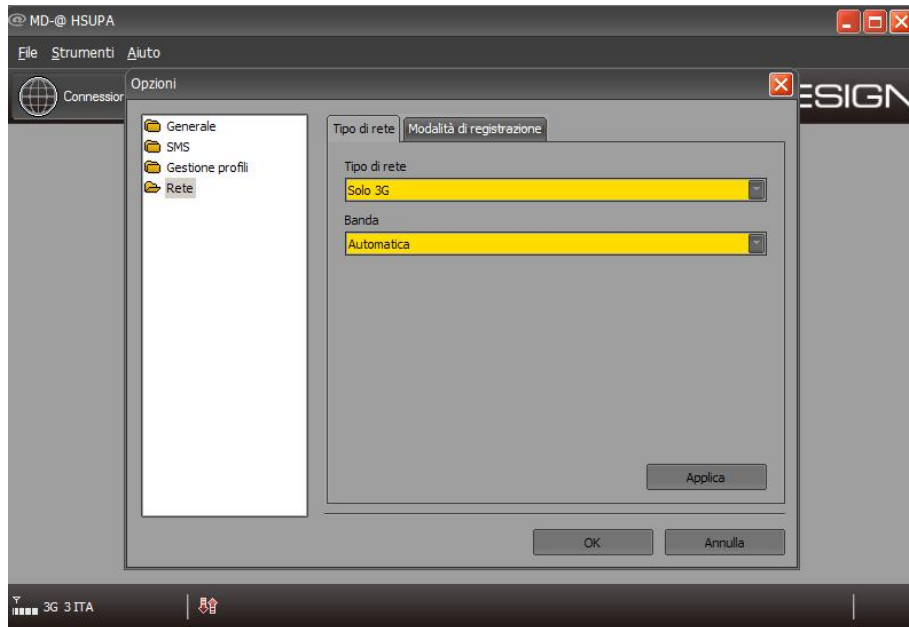


Fig. 4